

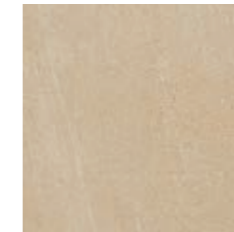


# LIMESTONE

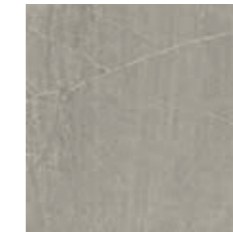
STONE SURFACE



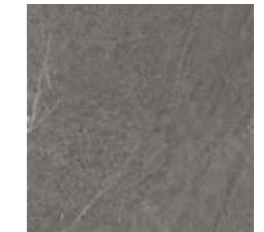
CLAY



AMBER



OYSTER



SLATE

## KERLITE 5plus

Superfici / Surfaces:  
NATURAL

± 5,5 mm	100x300 cm 39"x118"	100x250 cm 39"x98 1/2"	100x100 cm 39"x39"	50x100 cm 19 1/2"x39"

**KERLITE** Kerlite 5plus è indicata per essere posata con il sistema Kerlite Easy (vedi sezione dedicata a pag. 368)  
*easy* Kerlite 5plus is suitable for installation with the Kerlite Easy system (see focused section on page 368)

## 14MM

Superfici / Surfaces:  
NATURAL, HONED, BLAZED, FIAMMATA

± 14 mm	90x90 cm 36"x36"	60x120 cm 24"x48"	60x60 cm 24"x24"	30x60 cm 12"x24"	90x90 cm 36"x36"	60x120 cm 24"x48"
					± 20 mm 	± 20 mm 
	Only NATURAL, HONED	Except FIAMMATA	Except FIAMMATA	Except FIAMMATA	Only FIAMMATA	Only FIAMMATA

### CARATTERISTICHE TECNICHE / TECHNICAL CHARACTERISTICS

Tabelle tecniche a pag. 378-384  
Technical tables on page 378-384



RESISTENZA ALLO SCIVOLAMENTO  
SLIP RESISTANCE  
R10 NATURAL  
R11 BLAZED, FIAMMATA



BASSA STONALIZZAZIONE  
LOW DESHADING  
V2



CARRABILE  
TRANSITABLE  
14 mm - 20 mm

### GARANZIA E ANTIBATTERICO / GUARANTEE AND ANTIMICROBIAL



GARANZIA 20 ANNI  
20 YEARS GUARANTEE



PROTEZIONE ANTIBATTERICA PROTECT®  
PROTECT® ANTIBACTERIAL PROTECTION  
HONED, NATURAL