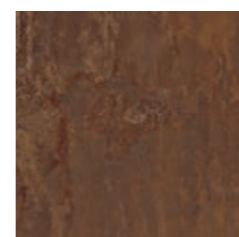


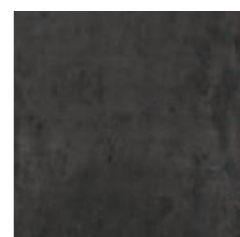


# METAL

METALLIC SLABS



CORTEN



IRON

## KERLITE 5plus

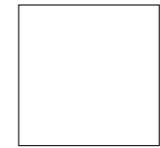
Superfici / Surfaces:  
NATURALE

± 5,5 mm

100x300 cm  
39"x118"



100x100 cm  
39"x39"



**KERLITE** Kerlite 5plus è indicata per essere posata con il sistema Kerlite Easy (vedi sezione dedicata a pag. 368)  
*easy* Kerlite 5plus is suitable for installation with the Kerlite Easy system (see focused section on page 368)

### CARATTERISTICHE TECNICHE / TECHNICAL CHARACTERISTICS


Tabelle tecniche a pag. 378 - 380  
Technical tables on page 378 - 380

 RESISTENZA ALLO SCIVOLAMENTO  
SLIP RESISTANCE  
R9 CORTEN

 BASSA STONALIZZAZIONE  
LOW DESHADING  
V2 IRON

 MEDIA STONALIZZAZIONE  
MEDIUM DESHADING  
V3 CORTEN

### GARANZIA E ANTIBATTERICO / GUARANTEE AND ANTIMICROBIAL

 GARANZIA 10 ANNI  
10 YEARS GUARANTEE

 PROTEZIONE ANTIBATTERICA PROTECT®  
PROTECT® ANTIBACTERIAL PROTECTION