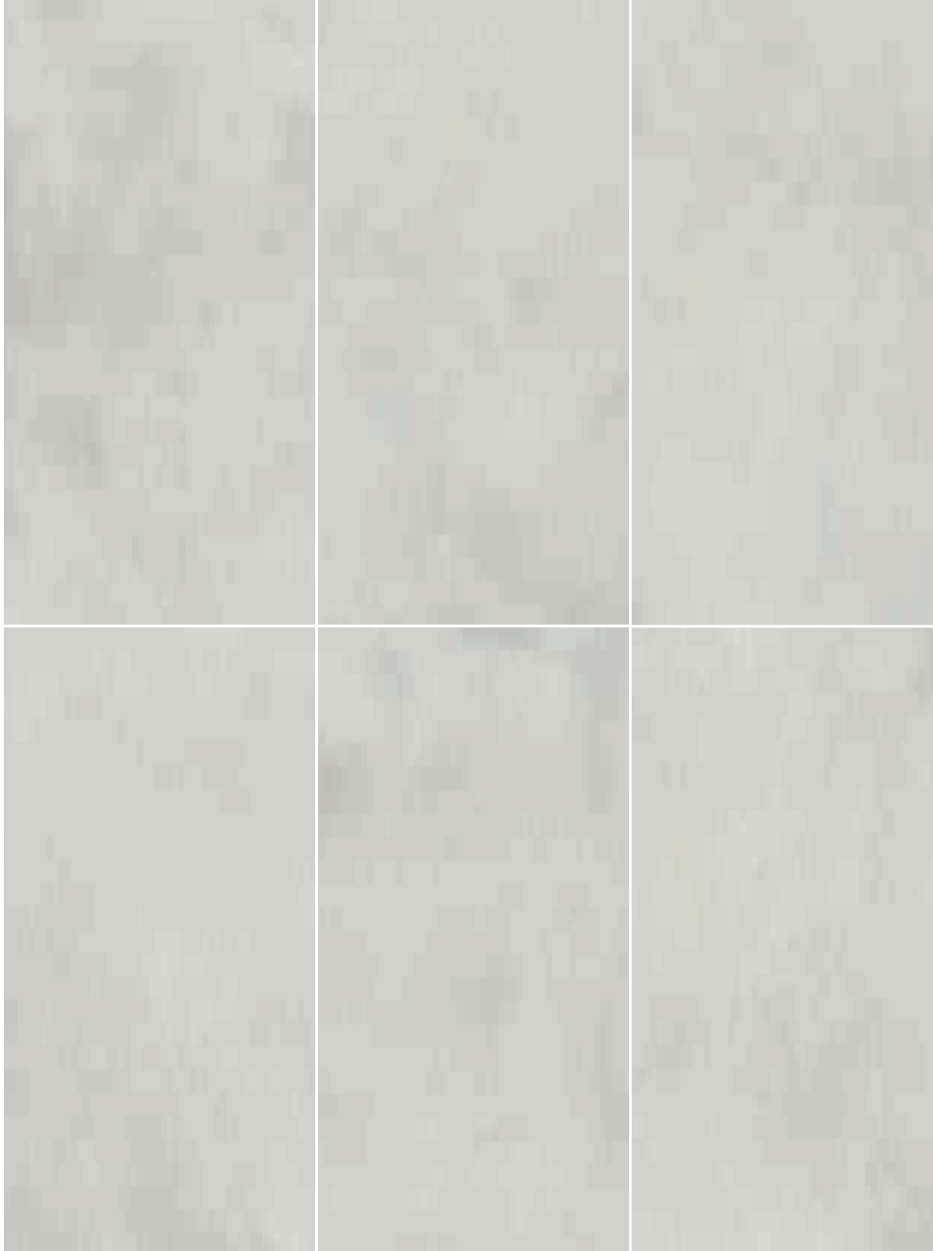


Brill

Gres porcellanato - Rettificato | Porcelain Stoneware - Rectified
NATURALE | MATTE

Conforming to Standards EN 14411 ISO 13006 APPENDICE G GRUPPO BIa UGL con $E_v \leq 0,5\%$

9 mm
thick



160x80 | $62\frac{7}{8}'' \times 31\frac{1}{2}''$
IMG01GA



120x120 | $47\frac{1}{4}'' \times 47\frac{1}{4}''$
IMG0112



120x60 | $47\frac{1}{4}'' \times 23\frac{1}{2}''$
IMG01BA



80x80 | $31\frac{1}{2}'' \times 31\frac{1}{2}''$
IMG0188



80x40 | $31\frac{1}{2}'' \times 15\frac{3}{4}''$
IMG0184



60x60 | $23\frac{1}{2}'' \times 23\frac{1}{2}''$
IMG0168



30x60 | $11\frac{7}{8}'' \times 23\frac{1}{2}''$
IMG0163

42

Pezzi speciali | Trims



Battiscopa

7x60 | $2\frac{3}{4}'' \times 23\frac{1}{2}''$
IMG0176



Pcs Box 10



Gradone con toro

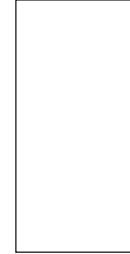
120x33x4 | $47\frac{1}{4}'' \times 13'' \times 1\frac{3}{4}''$
IMG01GT2



Pcs Box 2



6 mm
thick



160x320x0,6 | 62^{7/8}"x125^{3/4}"x1/4"
IMG01XXA

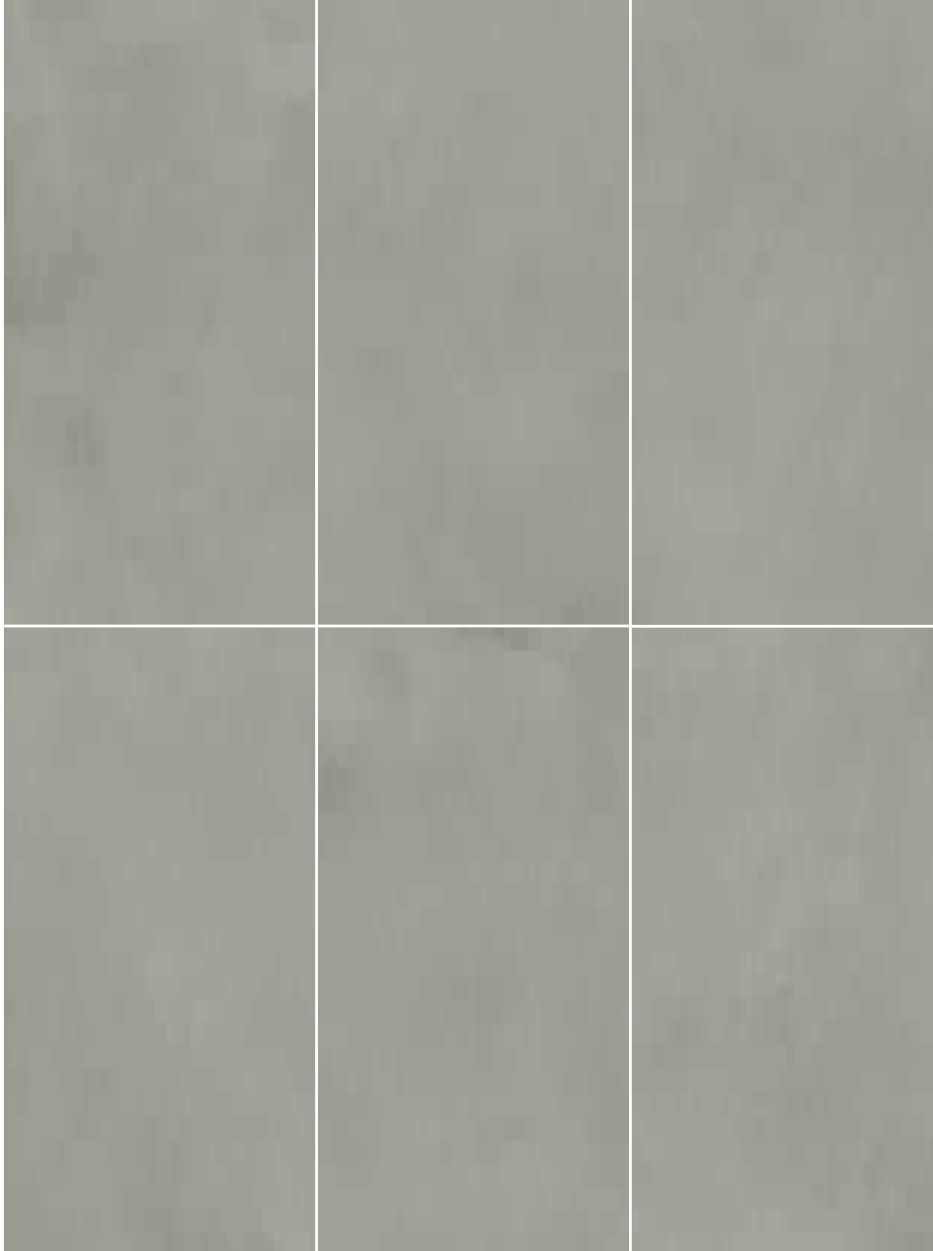


120x260x0,6 | 47^{1/4}"x102^{1/3}"x1/4"
IMG01XMA

Cool

Gres porcellanato - Rettificato | Porcelain Stoneware - Rectified
NATURALE | MATTE

Conforming to Standards EN 14411 ISO 13006 APPENDICE G GRUPPO BIa UGL con $E_v \leq 0,5\%$



9 mm
thick



160x80 | $62\frac{7}{8}'' \times 31\frac{1}{2}''$
IMG02GA



120x120 | $47\frac{1}{4}'' \times 47\frac{1}{4}''$
IMG0212



120x60 | $47\frac{1}{4}'' \times 23\frac{1}{2}''$
IMG02BA



80x80 | $31\frac{1}{2}'' \times 31\frac{1}{2}''$
IMG0288



80x40 | $31\frac{1}{2}'' \times 15\frac{3}{4}''$
IMG0284



60x60 | $23\frac{1}{2}'' \times 23\frac{1}{2}''$
IMG0268



30x60 | $11\frac{7}{8}'' \times 23\frac{1}{2}''$
IMG0263

Antislip
 9 mm



80x80 | $31\frac{1}{2}'' \times 31\frac{1}{2}''$
IMG0288A

20 mm
thick

Outfloor20
 20 mm



80x80 | $31\frac{1}{2}'' \times 31\frac{1}{2}''$
IMG02882

44

Pezzi speciali | Trims



Battiscopa

7x60 | $2\frac{3}{4}'' \times 23\frac{1}{2}''$
IMG0276

●
 Pcs Box 10



Gradone con toro

120x33x4 | $47\frac{1}{4}'' \times 13'' \times 1\frac{3}{4}''$
IMG02GT2

●
 Pcs Box 2

Supreme[®]
EXTRAORDINARY SLABS

Magnetica



V2
moderate



Heavy traffic
Traffico intenso

6 mm
thick



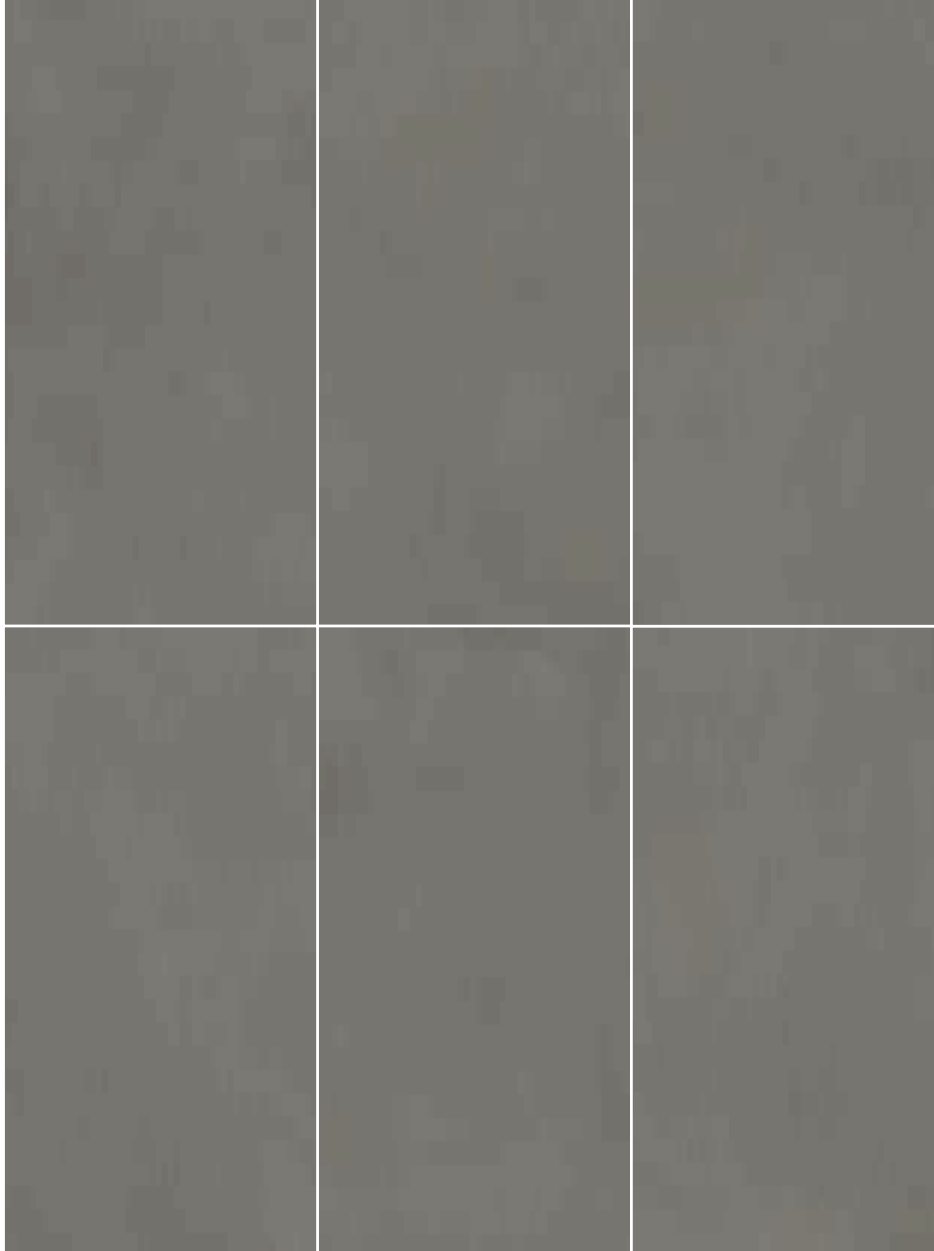
120x260x0,6 | 47¹/₄"x102²/₃"x1/4"
IMG02XMA



Appeal

Gres porcellanato - Rettificato | Porcelain Stoneware - Rectified
NATURALE | MATTE

Conforming to Standards EN 14411 ISO 13006 APPENDICE G GRUPPO BIa UGL con Ev ≤ 0,5%



9 mm
 thick



160x80 | 62^{7/8}"x31^{1/2}"
IMG03GA



120x120 | 47^{1/4}"x47^{1/4}"
IMG0312



120x60 | 47^{1/4}"x23^{1/2}"
IMG03BA



80x80 | 31^{1/2}"x31^{1/2}"
IMG0388



80x40 | 31^{1/2}"x15^{3/4}"
IMG0384



60x60 | 23^{1/2}"x23^{1/2}"
IMG0368



30x60 | 11^{7/8}"x23^{1/2}"
IMG0363

Antislip
 9 mm



80x80 | 31^{1/2}"x31^{1/2}"
IMG0388A

20 mm
 thick

Outfloor20
 20 mm



80x80 | 31^{1/2}"x31^{1/2}"
IMG03882

46

Pezzi speciali | Trims



Battiscopa

7x60 | 2^{3/4}"x23^{1/2}"
IMG0376



Pcs Box 10



Gradone con toro

120x33x4 | 47^{1/4}"x13"x1^{3/4}"
IMG03GT2



Pcs Box 2

Supreme[®]
EXTRAORDINARY SLABS

Magnetica



V2
moderate



Heavy traffic
Traffico intenso

6 mm
thick



120x260x0,6 | 47¹/₄"x102²/₃"x1/4"
IMG03XMA



Charm

Gres porcellanato - Rettificato | Porcelain Stoneware - Rectified
NATURALE | MATTE

Conforming to Standards EN 14411 ISO 13006 APPENDICE G GRUPPO BIa UGL con Ev ≤ 0,5%

9 mm
thick



160x80 | 62^{7/8}"x31^{1/2}"
IMG04GA



120x120 | 47^{1/4}"x47^{1/4}"
IMG0412



120x60 | 47^{1/4}"x23^{1/2}"
IMG04BA



80x80 | 31^{1/2}"x31^{1/2}"
IMG0488



80x40 | 31^{1/2}"x15^{3/4}"
IMG0484



60x60 | 23^{1/2}"x23^{1/2}"
IMG0468



30x60 | 11^{7/8}"x23^{1/2}"
IMG0463

Antislip
 9 mm



80x80 | 31^{1/2}"x31^{1/2}"
IMG0488A

48

Pezzi speciali | Trims



Battiscopa

7x60 | 2^{3/4}"x23^{1/2}"
IMG0476

●
 Pcs Box 10



Gradone con toro

120x33x4 | 47^{1/4}"x13"x1^{3/4}"
IMG04GT2

●
 Pcs Box 2

Supreme[®]
EXTRAORDINARY SLABS

Magnetica



V2
moderate



Heavy traffic
Traffico intenso

6 mm
thick



120x260x0,6 | 47¹/₄"x102²/₃"x1/4"

IMG04XMA

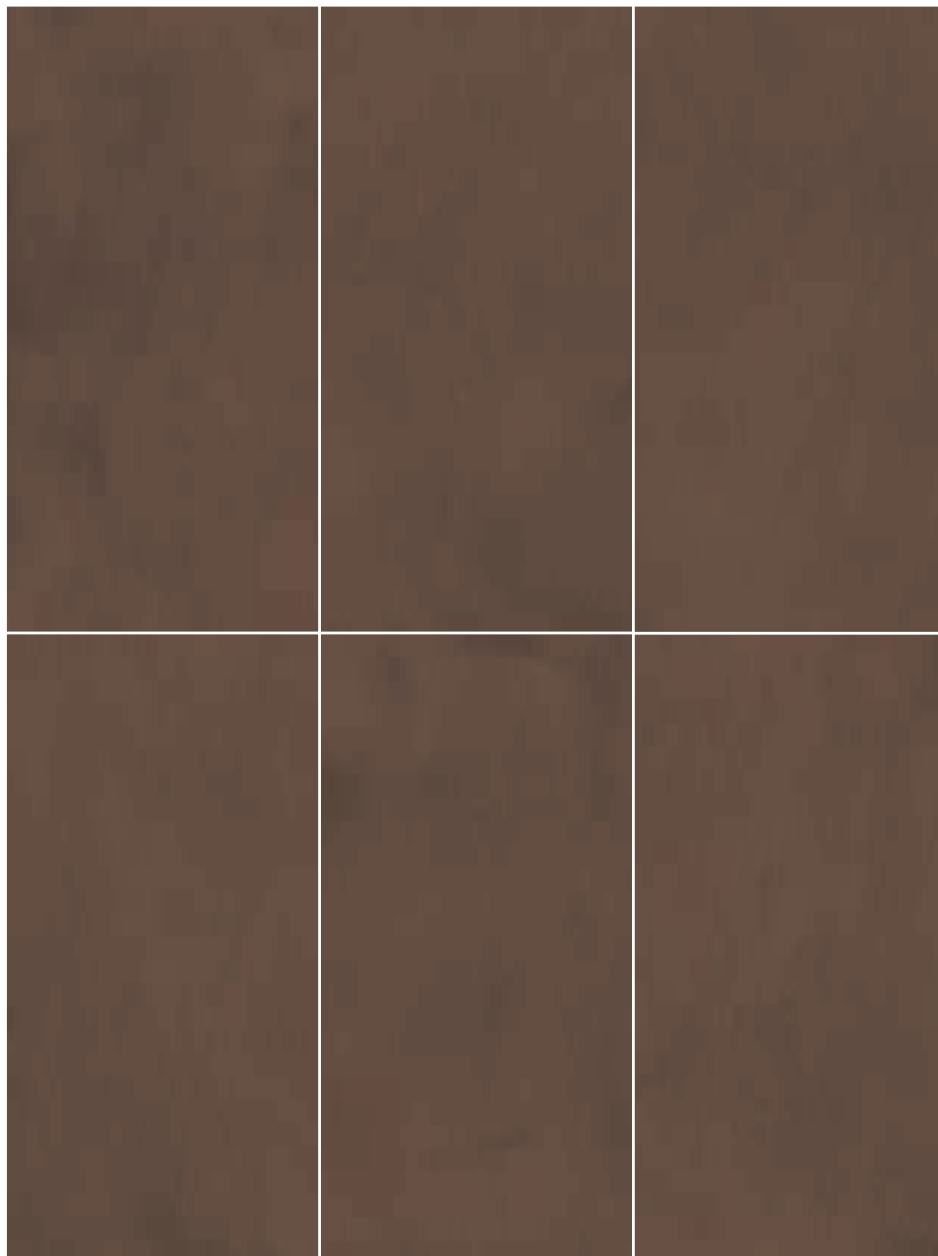


Magic

Gres porcellanato - Rettificato | Porcelain Stoneware - Rectified
NATURALE | MATTE

Conforming to Standards EN 14411 ISO 13006 APPENDICE G GRUPPO BIa UGL con Ev ≤ 0,5%

9 mm
thick



160x80 | 62^{7/8}"x31^{1/2}"
IMG05GA



120x120 | 47^{1/4}"x47^{1/4}"
IMG0512



120x60 | 47^{1/4}"x23^{1/2}"
IMG05BA



80x80 | 31^{1/2}"x31^{1/2}"
IMG0588



80x40 | 31^{1/2}"x15^{3/4}"
IMG0584



60x60 | 23^{1/2}"x23^{1/2}"
IMG0568



30x60 | 11^{7/8}"x23^{1/2}"
IMG0563

Antislip
9 mm



80x80 | 31^{1/2}"x31^{1/2}"
IMG0588A

20 mm
thick

Outfloor20
20 mm



80x80 | 31^{1/2}"x31^{1/2}"
IMG05882

50

Pezzi speciali | Trims



Battiscopa

7x60 | 2^{3/4}"x23^{1/2}"
IMG0576



Pcs Box 10



Gradone con toro

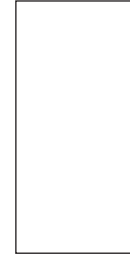
120x33x4 | 47^{1/4}"x13"x1^{3/4}"
IMG05GT2



Pcs Box 2



6 mm
thick



160x320x0,6 | 62^{7/8}"x125^{3/4}"x1/4"
IMG05XXA
■



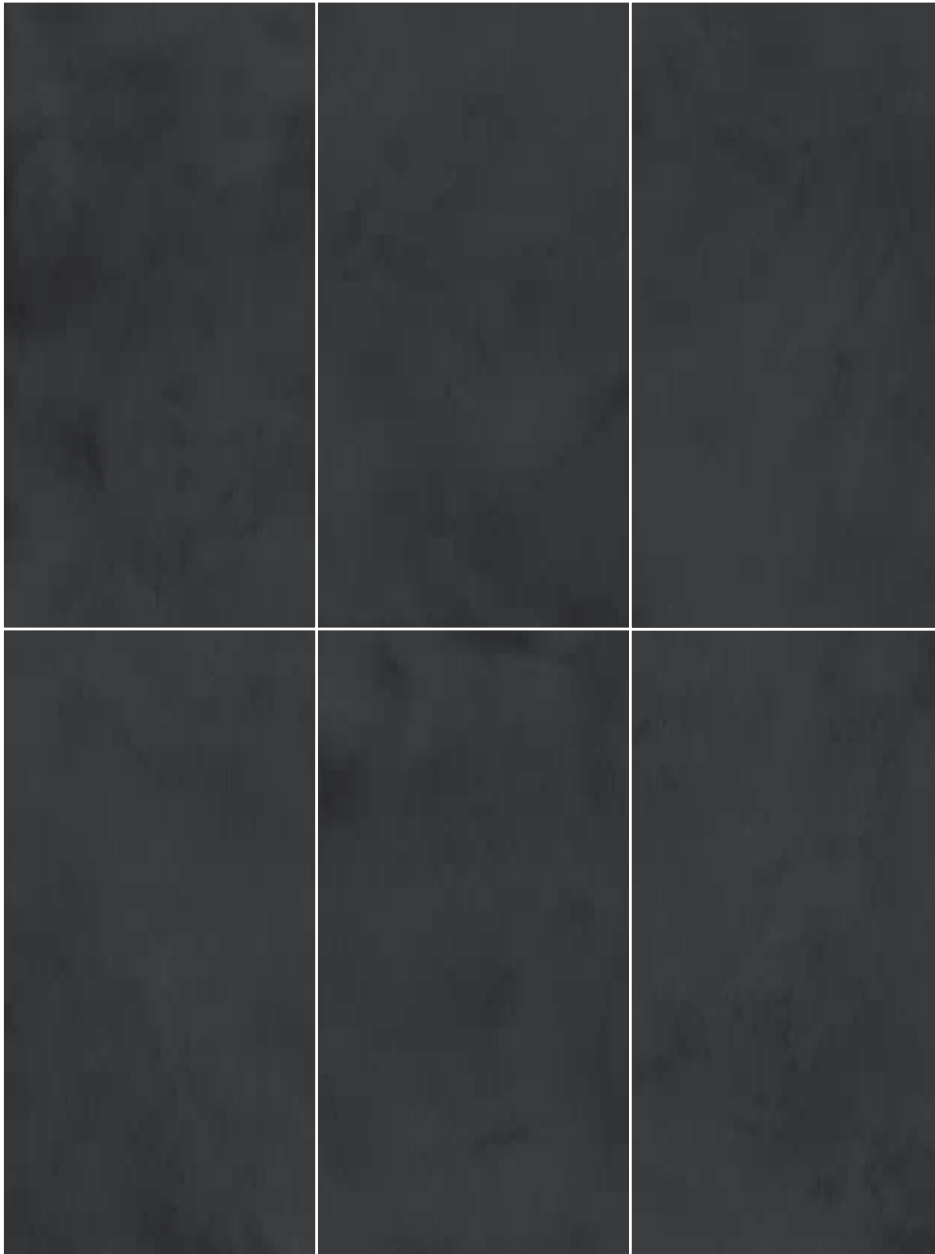
120x260x0,6 | 47^{1/4}"x102^{1/3}"x1/4"
IMG05XMA
■

Mystique

Gres porcellanato - Rettificato | Porcelain Stoneware - Rectified
NATURALE | MATTE

Conforming to Standards EN 14411 ISO 13006 APPENDICE G GRUPPO BIa UGL con Ev ≤ 0,5%

9 mm
thick



160x80 | 62^{7/8}"x31^{1/2}"
IMG06GA



120x120 | 47^{1/4}"x47^{1/4}"
IMG0612



120x60 | 47^{1/4}"x23^{1/2}"
IMG06BA



80x80 | 31^{1/2}"x31^{1/2}"
IMG0688



80x40 | 31^{1/2}"x15^{3/4}"
IMG0684



60x60 | 23^{1/2}"x23^{1/2}"
IMG0668



30x60 | 11^{7/8}"x23^{1/2}"
IMG0663



52

Pezzi speciali | Trims



Battiscopa

7x60 | 2^{3/4}"x23^{1/2}"
IMG0676



Pcs Box 10



Gradone con toro

120x33x4 | 47^{1/4}"x13"x1^{3/4}"
IMG06GT2



Pcs Box 2



V2
moderate



Heavy traffic
Traffico intenso

6 mm
thick



160x320x0,6 | 62^{7/8}"x125^{3/4}"x1/4"
IMG06XXA



120x260x0,6 | 47^{1/4}"x102^{1/3}"x1/4"
IMG06XMA

Decoro Grid $\frac{9 \text{ mm}}$ thick

Gres porcellanato - Rettificato | Porcelain Stoneware - Rectified
NATURALE | MATTE

Conforming to Standards EN 14411 ISO 13006 APPENDICE G GRUPPO B1a UGL con Ev $\leq 0,5\%$

Brill



54

120x60 | 47 $\frac{1}{4}$ "x23 $\frac{1}{2}$ "
IMG01BAG



Cool



120x60 | 47 $\frac{1}{4}$ "x23 $\frac{1}{2}$ "
IMG02BAG



Appeal



120x60 | 47 $\frac{1}{4}$ "x23 $\frac{1}{2}$ "
IMG03BAG



Charm



120x60 | 47 $\frac{1}{4}$ "x23 $\frac{1}{2}$ "
IMG04BAG



Magic



120x60 | 47 $\frac{1}{4}$ "x23 $\frac{1}{2}$ "
IMG05BAG



Mystique



120x60 | 47 $\frac{1}{4}$ "x23 $\frac{1}{2}$ "
IMG06BAG



Magnetica

Decoro Cesello

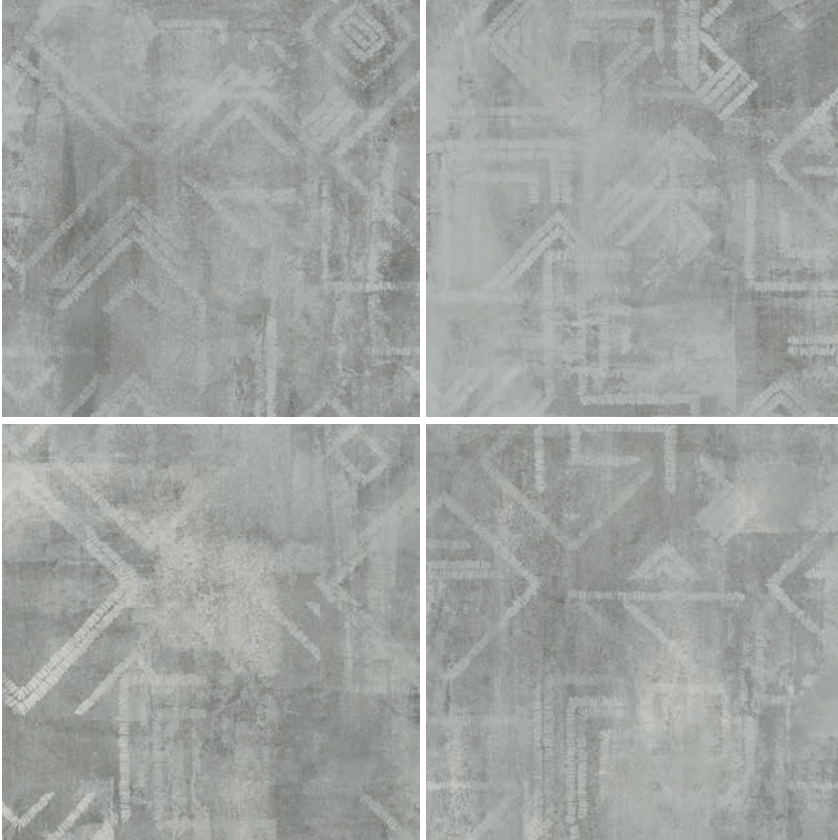
9 mm
thick



Gres porcellanato - Rettificato | Porcelain Stoneware - Rectified
NATURALE | MATTE

Conforming to Standards EN 14411 ISO 13006 APPENDICE G GRUPPO BIa UGL con $E_v \leq 0,5\%$

Cesello



80x80 | 31¹/₂"x31¹/₂"
IMG0088C



Mosaici 9 mm thick

Gres porcellanato - Rettificato | Porcelain Stoneware - Rectified
NATURALE | MATTE

Conforming to Standards EN 14411 ISO 13006 APPENDICE G GRUPPO BIa UGL con Ev ≤ 0,5%

MOSAICO GEOMETRIA

30x30 | 11⁷/₈"x11⁷/₈"



BRILL
30x30 | 11⁷/₈"x11⁷/₈"
IMG01MG



COOL
30x30 | 11⁷/₈"x11⁷/₈"
IMG02MG



APPEAL
30x30 | 11⁷/₈"x11⁷/₈"
IMG03MG



CHARM
30x30 | 11⁷/₈"x11⁷/₈"
IMG04MG



MAGIC
30x30 | 11⁷/₈"x11⁷/₈"
IMG05MG



MYSTIQUE
30x30 | 11⁷/₈"x11⁷/₈"
IMG06MG

MURETTO SPECCHIO

30x30 | 11⁷/₈"x11⁷/₈"



BRILL
30x30 | 11⁷/₈"x11⁷/₈"
IMG01MS



COOL
30x30 | 11⁷/₈"x11⁷/₈"
IMG02MS



APPEAL
30x30 | 11⁷/₈"x11⁷/₈"
IMG03MS



CHARM
30x30 | 11⁷/₈"x11⁷/₈"
IMG04MS



MAGIC
30x30 | 11⁷/₈"x11⁷/₈"
IMG05MS



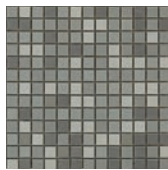
MYSTIQUE
30x30 | 11⁷/₈"x11⁷/₈"
IMG06MS

MOSAICO OXYDE

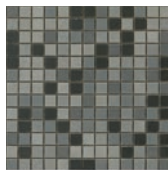
30x30 | 11⁷/₈"x11⁷/₈"



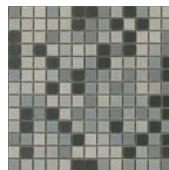
BRILL
30x30 | 11⁷/₈"x11⁷/₈"
IMG01MX



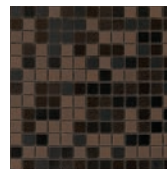
COOL
30x30 | 11⁷/₈"x11⁷/₈"
IMG02MX



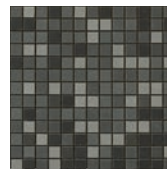
APPEAL
30x30 | 11⁷/₈"x11⁷/₈"
IMG03MX



CHARM
30x30 | 11⁷/₈"x11⁷/₈"
IMG04MX



MAGIC
30x30 | 11⁷/₈"x11⁷/₈"
IMG05MX



MYSTIQUE
30x30 | 11⁷/₈"x11⁷/₈"
IMG06MX

MOSAICO

30x30 | 11⁷/₈"x11⁷/₈"



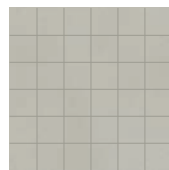
BRILL
30x30 | 11⁷/₈"x11⁷/₈"
IMG013MA



COOL
30x30 | 11⁷/₈"x11⁷/₈"
IMG023MA



APPEAL
30x30 | 11⁷/₈"x11⁷/₈"
IMG033MA



CHARM
30x30 | 11⁷/₈"x11⁷/₈"
IMG043MA



MAGIC
30x30 | 11⁷/₈"x11⁷/₈"
IMG053MA



MYSTIQUE
30x30 | 11⁷/₈"x11⁷/₈"
IMG063MA