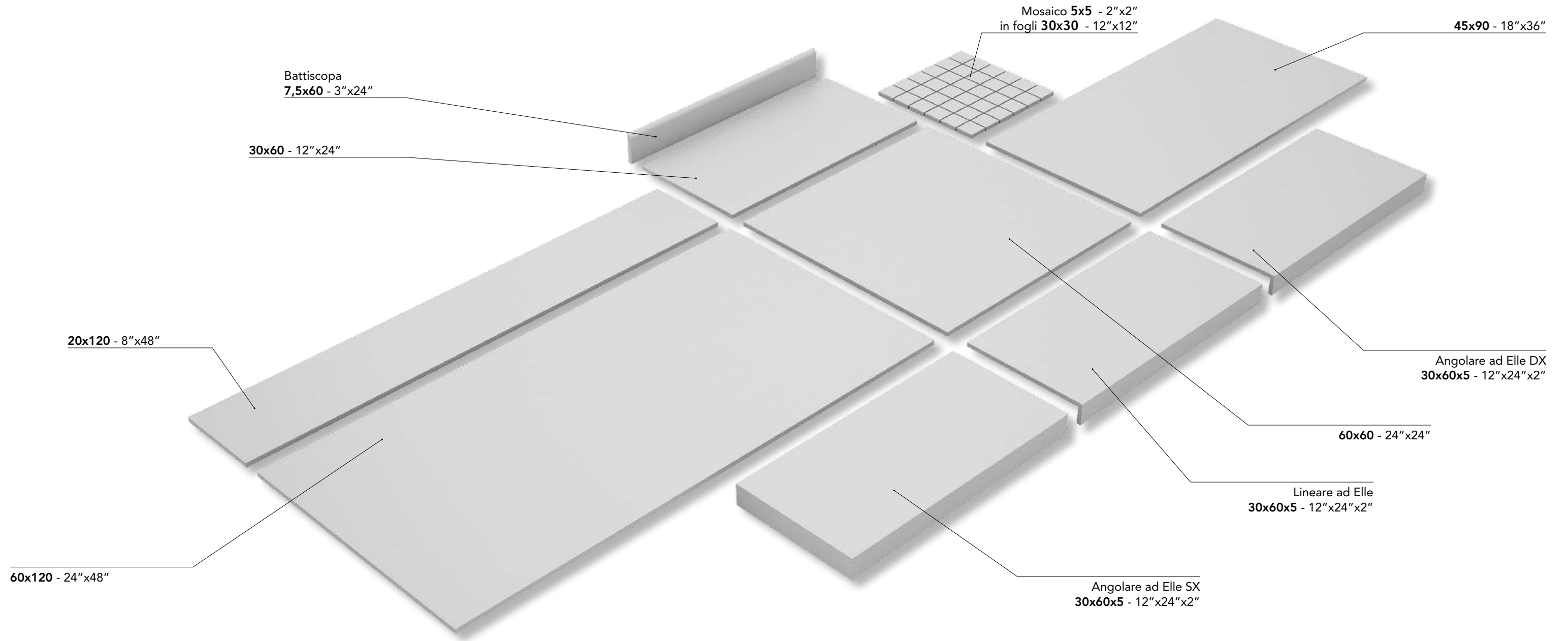


SILVER STONE_LISCIO/gres UGL



FINITURE DISPONIBILI AVAILABLE FINISHES:

Naturale/Rettificato - Unpolished/Rectified
(60x120 - 20x120 - 45x90 - 60x60 - 30x60 - MOSAICO 5x5
BATTISCOPIA 7,5x60 - LINEARE AD ELLE - ANGOLARE AD ELLE)

Lappato/Rettificato - Honed/Rectified
(60x120 - 45x90 - 60x60 - 30x60 - MOSAICO 5x5 - BATTISCOPIA 7,5x60)

LISCIO IVORY/



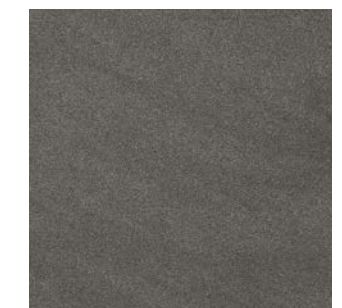
LISCIO GREIGE/



LISCIO SILVER/



LISCIO GRAPHITE/



LISCIO Naturale/Rettificato

Unpolished/Rectified - Matt/Rektifiziert - Naturel/Rectifié - Натуральный/Ректифицированный

60x120 - 24"x48"

SS621R Ivory
SS622R Greige
SS623R Silver
SS627R Graphite

20x120 - 8"x48"

SS201R Ivory
SS202R Greige
SS203R Silver
SS207R Graphite

45x90 - 18"x36"

SS491R Ivory
SS492R Greige
SS493R Silver
SS497R Graphite

60x60 - 24"x24"

SS601R Ivory
SS602R Greige
SS603R Silver
SS607R Graphite

30x60 - 12"x24"

SS361R Ivory
SS362R Greige
SS363R Silver
SS367R Graphite

7,5x60 - 3"x24"

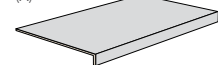


Battiscopa - Bullnose
Sockel - Plinthe - Плинтус

SSB601R Ivory
SSB602R Greige
SSB603R Silver
SSB607R Graphite

30x60x5 - 12"x24"x2"

(A)



Lineare ad Elle - L-shaped Element
L-Form Element - Élément linéaire en "L"
Г-образная Прямая Ступень

SS1GLR Ivory
SS2GLR Greige
SS3GLR Silver
SS7GLR Graphite

30x60x5 - 12"x24"x2"

(A)

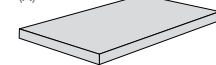


Angolare ad Elle - L-shaped Corner Element
L-Form Eckelement - Élément d'angle en "L"
Г-образная Угловая Ступень

SS1GADR Ivory
SS2GADR Greige
SS3GADR Silver
SS7GADR Graphite

30x60x5 - 12"x24"x2"

(A)



SS1GASR Ivory
SS2GASR Greige
SS3GASR Silver
SS7GASR Graphite

LISCIO Lappato/Rettificato

Honed/Rectified - Geläpft/Rektifiziert - Adouci/Rectifié - Доведенный/Ректифицированный

60x120 - 24"x48"

SS621LR Ivory
SS622LR Greige
SS623LR Silver
SS627LR Graphite

45x90 - 18"x36"

SS491LR Ivory
SS492LR Greige
SS493LR Silver
SS497LR Graphite

60x60 - 24"x24"

SS601LR Ivory
SS602LR Greige
SS603LR Silver
SS607LR Graphite

30x60 - 12"x24"

SS361LR Ivory
SS362LR Greige
SS363LR Silver
SS367LR Graphite

7,5x60 - 3"x24"



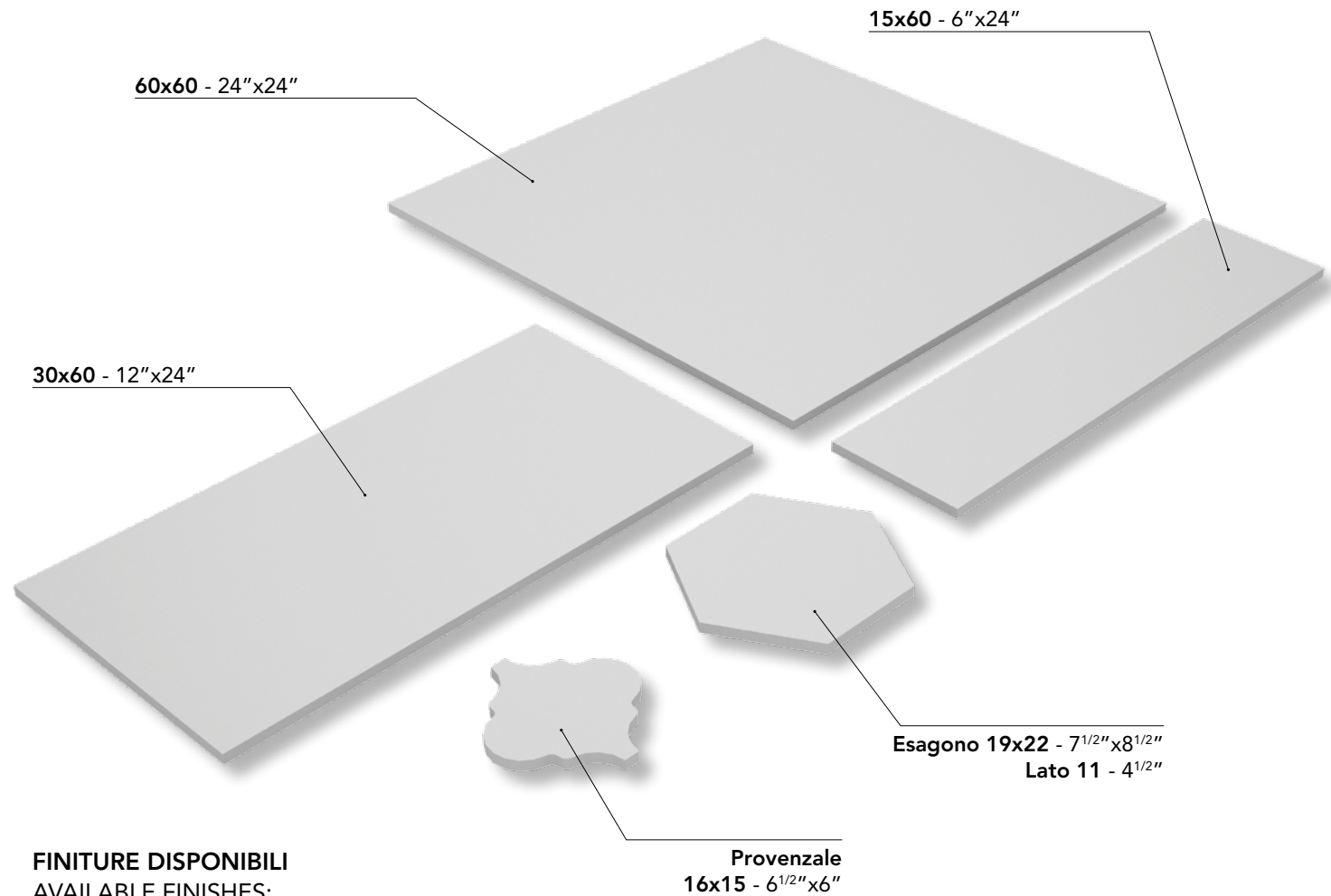
Battiscopa - Bullnose
Sockel - Plinthe - Плинтус

SSB601L Ivory
SSB602L Greige
SSB603L Silver
SSB607L Graphite

(A)

Per una posa corretta è consigliata la tecnica del "buttering-floating" (doppia spalmatura): riempire bene con malta cementizia/collante il retro dell'elemento e la superficie di posa senza lasciare vuoti. For correct laying, the "buttering-floating" technique is recommended: fill the back of the element and the laying surface well with cement-based mortar or glue without leaving any gaps. - Für die korrekte Verlegung wird die "Buttering-Floating-Technik" (zweifaches Auftragen) empfohlen: Die Rückseite des Elements und die zu verlegende Fläche gut mit Zementmörtel oder Kleber bestreichen, ohne freie Stellen zu lassen. - Pour une pose correcte, la technique du «buttering-floating» (double encollage) est conseillée: bien remplir de mortier à base de ciment/adhésif le dos de l'élément et la surface de pose sans laisser de vides. - Для правильной укладки рекомендуется метод "buttering-floating" (двойного промазывания): тщательно покройте цементно-песчаным раствором/клеем заднюю сторону плитки и основание для укладки, не оставляя непокрытых участков.

SILVER STONE_MIX/gres UGL



FINITURE DISPONIBILI
AVAILABLE FINISHES:

Strutturato/Rettificato - Textured/Rectified
(60x60 - 30x60 - 15x60 - ESAGONO - PROVENZALE)

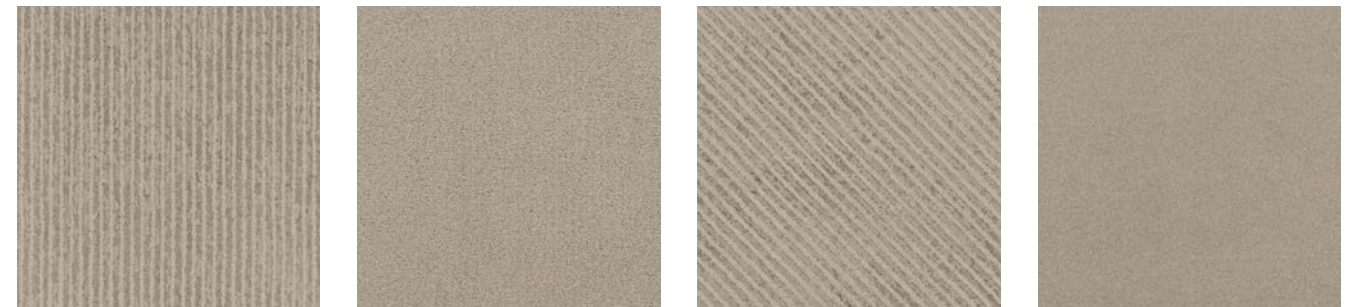
MIX
Strutturato/Rettificato
Textured/Rectified - Strukturiert/Rektifiziert - Structuré/Rectifié - Структурированный/Ректифицированный

60x60 - 24"x24"	30x60 - 12"x24"	15x60 - 6"x24"	PROVENZALE 16x15 - 6 1/2"x6"	ESAGONO 19x22 - 7 1/2"x8 1/2"
SSM601R Ivory	SSM361R Ivory	SSM161R Ivory	SSM1PR Ivory	SSM1ER Ivory
SSM602R Greige	SSM362R Greige	SSM162R Greige	SSM2PR Greige	SSM2ER Greige
SSM603R Silver	SSM363R Silver	SSM163R Silver	SSM3PR Silver	SSM3ER Silver
SSM607R Graphite	SSM367R Graphite	SSM167R Graphite	SSM7PR Graphite	SSM7ER Graphite

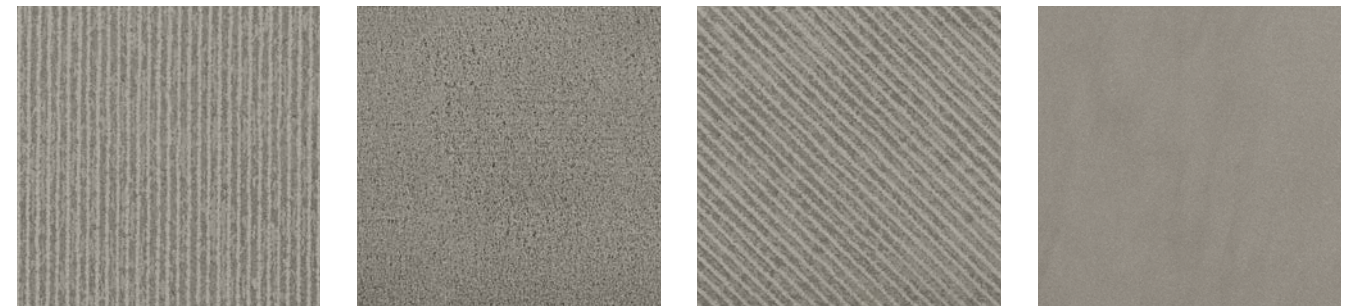
MIX IVORY/



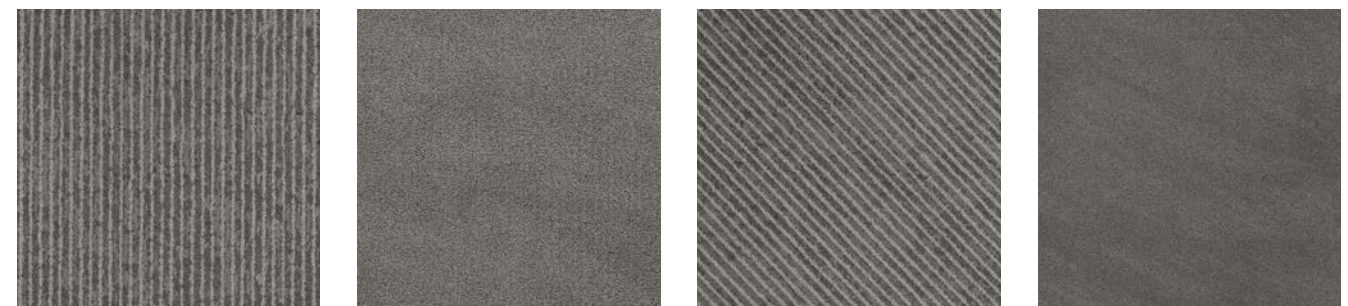
MIX GREIGE/



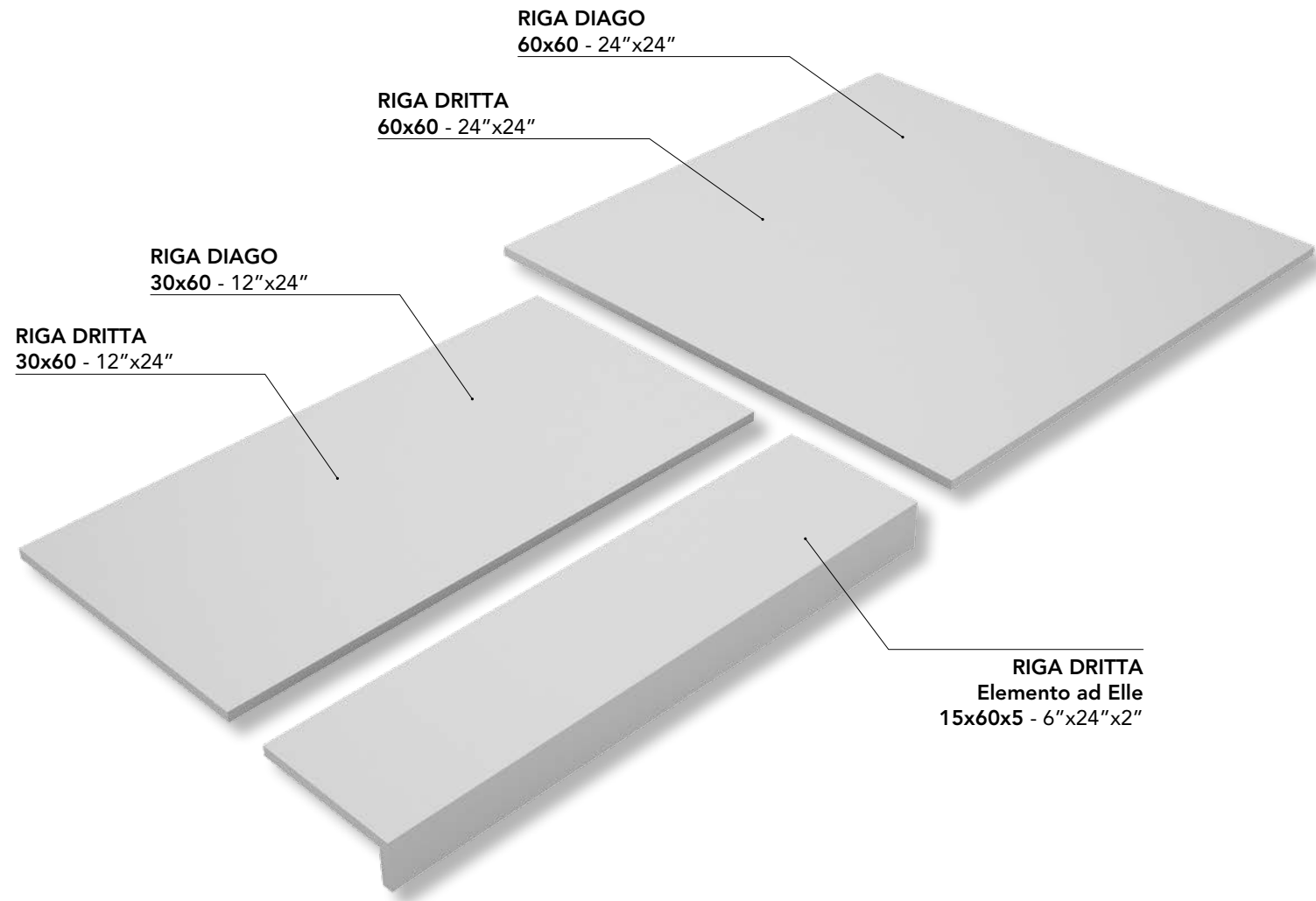
MIX SILVER/



MIX GRAPHITE/



SILVER STONE_RIGA/gres UGL



FINITURE DISPONIBILI
AVAILABLE FINISHES:

Esterno R11/Rettificato - Outdoor R11/Rectified
(60x60 - 30x60 - ELEMENTO AD ELLE)

Esterno R11/Rettificato

Outdoor R11/Rectified - Aussenbereich R11/Rektifiziert - Extérieur R11/Rectifié - Внешний R11/Ректифицированный

RIGA DRITTA 60x60 - 24"x24"

SS61ER1 Ivory
SS62ER1 Greige
SS63ER1 Silver
SS67ER1 Graphite

RIGA DIAGO 60x60 - 24"x24"

SS61ER2 Ivory
SS62ER2 Greige
SS63ER2 Silver
SS67ER2 Graphite

RIGA DRITTA 30x60 - 12"x24"

SS31ER1 Ivory
SS32ER1 Greige
SS33ER1 Silver
SS37ER1 Graphite

RIGA DIAGO 30x60 - 12"x24"

SS31ER2 Ivory
SS32ER2 Greige
SS33ER2 Silver
SS37ER2 Graphite

RIGA DRITTA 15x60x5 - 6"x24"x2"

(A)



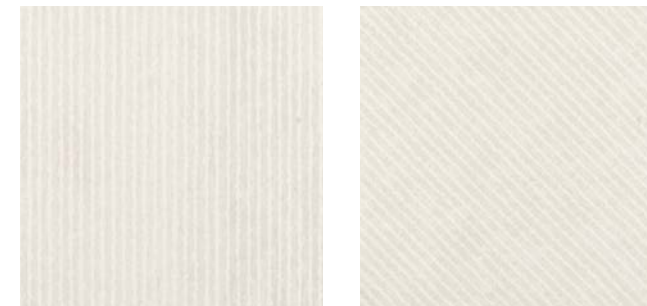
Elemento ad Elle
L-shape trim - Schenkelplatte
Carreau à rebord - Уголки

SS1ELR Ivory
SS2ELR Greige
SS3ELR Silver
SS7ELR Graphite

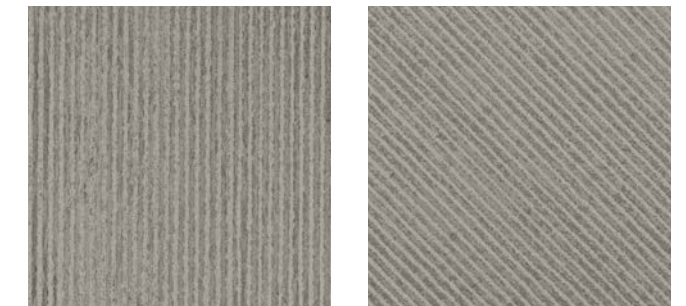
(A)

Per una posa corretta è consigliata la tecnica del "buttering-floating" (doppia spalmatura): riempire bene con malta cementizia/collante il retro dell'elemento e la superficie di posa senza lasciare vuoti. - For correct laying, the "buttering-floating" technique is recommended: fill the back of the element and the laying surface well with cement-based mortar or glue without leaving any gaps. - Für die korrekte Verlegung wird die "Buttering-Floating-Technik" (zweifaches Auftragen) empfohlen: Die Rückseite des Elements und die zu verlegende Fläche gut mit Zementmörtel oder Kleber bestreichen, ohne freie Stellen zu lassen. - Pour une pose correcte, la technique du «buttering-floating» (double encollage) est conseillée: bien remplir de mortier à base de ciment/adhésif le dos de l'élément et la surface de pose sans laisser de vides. - Для правильной укладки рекомендуется метод "buttering-floating" (двойного промазывания): тщательно покройте цементно-песчаным раствором/клеем заднюю сторону плитки и основание для укладки, не оставляя непокрытых участков.

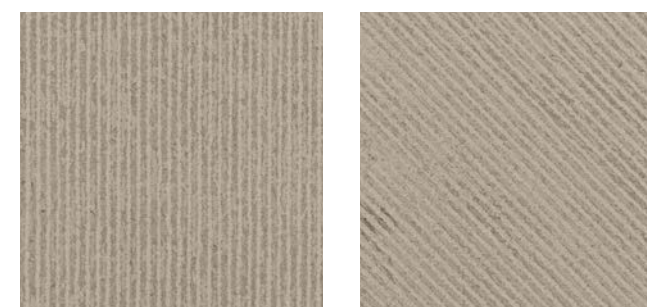
RIGA IVORY/



RIGA SILVER/



RIGA GREIGE/



RIGA GRAPHITE/

